

V6 World

CONGRESS 2014

IP on Everything





V6 World Congress 2014: IP on Everything

The Fourth Edition of V6 World will take place in Paris from 18 to 21 March 2014. The V6 World Congress will once again bring together ISPs, Enterprises, equipment vendors, and industry leaders to share their experiences, skills, and knowledge of deploying IPv6 worldwide..

V6 World Delegates: 50% Service Providers, 10% Enterprises

The profile of the V6 delegates demonstrates a growing internationalization and a very strong presence of service providers. (50%), vendors (25%), enterprises (10%), government representatives (5%) and researchers (10%).

Moreover, 47% of the delegates came from the European Union countries, 12% from the Middle East, 11% from Russia and non EU countries, 16% from North America, 10% from Asia, and 4% from South America.

The 2014 agenda: Large Scale IPv6 Deployments, Content Providers Strategies, Internet of Things

The 2014 edition will place particular emphasis on large scale deployments and measurement with testimonies from cable operators (Time Warner, Comcast) and content providers (Google, Facebook, LinkedIn). Other sessions will cover SDN, transition strategies, training issues and enterprises deployments.

A large session and a panel will be dedicated to Internet of Things. Indeed, the IoT area is ramping up in terms of hype. Even if the Internet community doesn't yet believe that the IoT is going to matter or the IoT world doesn't believe they want to connect to Internet, both share IPv6. While the IPv6 Internet deployment ramps up, the IoT world starts to move to IPv6.

An IPv6 Connection for the Delegates

Delegates at V6 World and the collocated MPLS & SDN World will be given the opportunity to experience demonstrations of IPv6 applications, delivered through the Marriott Paris Rive Gauche.

TUESDAY 18 MARCH 2014 IPV6 TECHNICAL TUTORIAL

07.45 WELCOME, REGISTRATION AND COFFEE



Morning session presented by
Bruno Stevant
TELECOM BRETAGNE
G6 ASSOCIATION

Morning Session

10.00 Challenges of IPv6 Training

Training is a necessary step for the adoption of IPv6. Of course, network administrators are in the front line and should be first to be concerned by such training. But IPv6 has impact way beyond network operations and personals from developers to hotliners may need to update their knowledge to the new Internet Protocol.

11.00 COFFEE BREAK

This session will describe the demand for training for these different categories of professionals and what should be the topics to be addressed. The session will also explain the challenges for the evolution of IPv6 training in the next years.

12.30 LUNCH



Tutorial Addressed by the G6 Association

Afternoon Session

14.00 How to Deploy IPv6

Deployment of IPv6 in production networks isn't as simple as extending the address field of an existing IPv4 network. It is relatively easy to provide an IPv6 connectivity to any node, but what about managing a stable, long-term, dual-stack and efficient IPv6 connectivity in respect of best-practices ? This work is not to be done with the same focus, technologies and methodologies in backbone networks, in home networks, or in hosters networks.

15.00 COFFEE BREAK

This session will focus on the last one: How to deploy IPv6 to provide content and services?

16.30 END OF THE TUTORIAL



Afternoon session presented by
Johan Remy
Architecture Network and Telecom Manager
ADISTA



Emmanuel Thierry
TELECOM BRETAGNE
G6 ASSOCIATION

WEDNESDAY 19 MARCH 2014 CONFERENCE DAY ONE

07.45 WELCOME, REGISTRATION AND COFFEE



CHAIRPERSON

Latif Ladid | President | IPv6 FORUM
Chair | IEEE COMSOC IOT

Keynote Session

08.30 - 08.50



The Open IPv6 Architecture

Tina Tsou | HUAWEI and **Diego Lopez**
| TELEFONICA I+D

08.50 - 09.10



M2M deployments in SDN Enabled IPv6 Networks

Mike McBride | Director of Technology IP & Broadband |
ERICSSON

09.10 - 09.30



IPv6-Centric Networking

Mark Townsley | CISCO

09.30 - 10.00



Dr. Robert Kahn | Founder & President of CNRI

Transition Session

10.00 **Economics of IPv6 Transition**

Several factors have led to the current state of IPv6 adoption. Explaining these as part of IPv6 transition economics and touching on the decisions ISPs and end-users must make as they consider IPv4 depletion in relation to their short-term and long-term business growth.



John Curran | President and CEO of ARIN | ARIN

10.30 COFFEE BREAK

Panel/Debate

11.00 **IoT Innovation through IPv6**

This session will lay out the fundamental how IPv6 can be used and exploited in reality with a comprehensive package acquired in the various research projects and ETSI standardization.



MODERATOR

Latif Ladid | IPv6 FORUM

PARTICIPANTS

Prof. Dr. Peter Kirstein | UNIVERSITY COLLEGE LONDON
Sebastian Ziegler | RESEARCH PERSPECTIVE IOT6 PROJECT
Christian Jacquenet | ORANGE M2M PERSPECTIVES
Patrick Guillemin | STANDARDIZATION ETSI M2M/ONEM2M
Antonio Skarmeta | IPv6 SECURITY IN IOT GEN6 PROJECT
Sheng Jiang | HUAWEI TECHNOLOGIES

12.30 LUNCH



AFTERNOON SESSIONS CHAIRPERSON

Silvia Hagen | SUNNY CONNECTION AG

Unleashing the Power of IPv6 Session

14.00 **Deployment of SDN IPv6**

Covering deployment of SDN-IPv6, customer benefits, user experience, and data analysis.

Tina Tsou | HUAWEI

14.30 **Segment Routing in IPv6 Networks**

The Segment Routing architecture is data-plane independent (MPLS or IPv6). Segment Routing over IPv6 requires a new Extension Header. Covering the main aspects, functions and features of the Segment Routing architecture, especially when applied to the IPv6 data-plane. It also covers the details of the SR-IPv6 Extension Header that is proposed.

Chris Martin | CISCO



15.00 **TeraStream an Infrastructure Cloud Model**

Axel Clauberg
| DEUTSCHE TELEKOM AG

15.30 **Lessons Learned from the First Deployment of an IPv6-only IPTV System**



Discussing the lessons learned from a recent deployment of an IPTV video delivery system into an IPv6-only network. Describing the deployment architecture, then discussing the challenges overcome.

Bill Ver Steeg | CISCO



16.00 **2014 CE Interop Announcement**

Erica Johnson | Director | UNH

16.10 COFFEE BREAK

Measurement Session

16.40 **IPv6, Act Now? Trends and measurements from RIPE NCC**



RIPE NCC is building the largest Internet measurement network ever made. RIPE Atlas employs a global network of probes that measure Internet connectivity and reachability, providing an unprecedented understanding of the state of the Internet in real time. Discussing IPv6 trends and measurements as seen from our Atlas project.

Nathalie Trenaman | Trainer, Network Coordination Centre (NCC) | RIPE

17.10 **World IPv6 Launch Measurements**



World IPv6 Launch in 2012 began a trajectory of increased IPv6 deployment in network operators around the globe. As part of that activity, Google, Facebook, and Yahoo! measured the amount of IPv6 traffic arriving at their servers and the Internet Society aggregated these numbers and reported them as part of the World IPv6 Launch measurements activity. Summarizing these measurements.

Phil Roberts | ISOC

Panel/Debate

17.40 **Deploying and Measuring IPv6 at Large Scale**



MODERATOR

Alain Fiocco | CISCO

PARTICIPANTS

David Miles | GOOGLE
John Brzozowski | COMCAST
Phil Roberts | ISOC
Eric Vyncke | IPv6 COUNCIL OF BELGIUM
Matthew Wilder | TELUS

19.00 END OF THE CONFERENCE DAY ONE WELCOME COCKTAIL

THURSDAY 20 MARCH 2014 CONFERENCE DAY TWO

07.45 WELCOME, REGISTRATION AND COFFEE



MORNING SESSIONS CHAIRPERSON

Yanick Pouffary | HP



AFTERNOON SESSIONS CHAIRPERSON

Eric Vyncke | IPV6 COUNCIL OF BELGIUM

Session Internet of Things

08.30 IoT and IPv6: New IPv6 Architecture for Constraint Device
Describing the ARESA2 platform and the SensOrLab testbed and the innovative way IPv6 multi-homing is managed. Discussing the work done on the DNS records to handle a REST architecture for the Internet of Things and facilitate the deployment of usages based on IPv6.

Authors: Laurent Toutain | TELECOM BRETAGNE and Sandoché Balakrichenan | AFNIC

08.50 IPv6, Low-power Awareness and Virtualization



Focusing on the optimization of the IPv6 Neighbor Discovery messages which eventually should save energy in battery powered sleepy wireless devices (wireless cell phones, tablets, home smart meters, etc.) and reduce necessity of frequent address resolution message exchanges in a 'virtualized' network where the nodes in a subnet are typically high. The optimization technique can be used for a self-organized IPv6 network.

Authors: Samita Chakrabarti, Jaume Rius I Riu, Ericsson

Samita Chakrabarti, Jaume Rius I Riu | ERICSSON

09.10 IPv6 Automatic - Current Status and Future



The Internet has become more and more complicated. Particularly, the Internet of Things rolls out. More and more devices are connected to the Internet. It requires networks to be able to manage themselves and attached devices automatically and dynamically.

Sheng Jiang | Senior Staff Engineer | HUAWEI

09.30 IPv6: Connecting Everyone and Everything

Focusing on the challenges network operators face in order to provide connectivity and services for billions of connected devices, and suggestions on how to successfully plan for optimizing their networks to efficiently serve the needs of the Internet of Things.

Authors: Suresh Krishnan, Wassim Haddad, Fredrik Garneij | ERICSSON

09.50 IPv6 Deployment in Japan



Covering the latest status of IPv6 deployment in legacy ICT industry and in new industry, especially focusing on Smart City. Especially, as for Smart City, the best current of practice of the Eco-system, which simultaneously achieves the improvement of productivity, energy saving, BCP and new business with BigData operation, are shown.

Hiroshi Esaki | Ph.D, Associated Professor | THE UNIVERSITY OF TOKYO

10.10 COFFEE BREAK

IPv6 Content Session



10.30 Linking in with IPv6 at LinkedIn

Franck Martin | LINKEDIN



10.50 The Road to IPv6: Bumpy

Paul Saab | FACEBOOK

Panel/Debate

11.10 IPv6 for Enterprise: at the Edge and Inside

MODERATOR
Yanick Pouffary | HP

PARTICIPANTS
Franck Martin | LINKEDIN
Paul Saab | FACEBOOK
Khalid Jawaid | CISCO

12.30 LUNCH

Deployments: Implementations & Transition Strategies

14.00 Completion of Japanese v6 Transformation

Next Spring, April 2014, NTT's nation wide FTTH and its CPE (a.k.a. «Home Gateway») will turn on IPv6 feature by default. This means, new subscribers (and also existing customers who use upgraded Home Gateway) will get IPv6 without no procedure after this change. Thus, People who would like to get «Internet subscription» will get IPv6 automatically.

Ayumu Yasuda | Sr.Research Manager | NTT

14.20 Network Service Providers more Specific Transition Techniques

Reviewing the various methods, techniques and standards to migrate routed networks and services to IPv6, with a focus on residential broadband service deployments. The presentation will do this by means of actual IPv6 migration use cases in by some major European network service providers to illustrate how to practical migrate scenarios to IPv6.



Roland Thienpont | Product Manager IP Division | ALCATEL-LUCENT

14.40 IPv6 Deployment Experiences at Google Fiber



David Miles
GOOGLE

15.00 IPv6 Deployment Experiences from Comcast

Sharing information around how Comcast has leveraged IPv6 for all of its services including the enablement of IPv6 for broadband, content, and infrastructure management. Future items including voice over IPv6 and IPv6 only broadband are highlighted.



John Brzozowski | COMCAST

15.20 IPv6: because everything needs connecting

The move to IPv6 is inevitable and the time to start the planning and transformation is now. Discussing a practical way to transition to IPv6 that is aligned with the overall business and IT strategies.

Yanick Pouffary | HP

15.40 Road to IPv6-Only Services in Mobile Networks

How can we make sure that existing handsets don't get impacted? How can we introduce IPv6-Only access in existing customer APNs without interrupting IPv4-Only? How can we handle legacy applications and services within our own mobile core network? How can we ensure that roaming, both inbound and outbound is not affected? Are there some outstanding challenges impossible to overcome?

Dave May | ROGERS COMMUNICATIONS

16.00 COFFEE BREAK

16.20 Migration of a Mobile Data APN to IPv6: Dual Stack or IPv6-only?

How can an LTE operator support Dual Stack, IPv6-only, and legacy IPv4-only terminals on a single data APN?

Nick Heatley | EE

16.40 IPv6 Hotspots

Presenting the IPv6 hotspot. Today, hotspots typically are IPv4-only, so we'd like to move this up to v6, hence less Nat'ing, plenty of addresses, and users get fast connectivity.



Carl Wuyts | GCD System Architect | TECHNICOLOR

17.00 Cloud+IPv6: Getting Real

Hiroshi Esaki Detailing an evaluation of the IPv6 readiness of OpenStack Grizzly and Havana releases. Showing the changes (hacks) needed to make OpenStack work on IPv6. The lessons learned are a guide for the evolution of OpenStack towards leveraging IPv6.



Ciprian Popoviciu | NEPHOS6

17.20 vCPE: Using NFV to ease IPv6 Deployment

Alain Durand | Distinguished Engineer | JUNIPER NETWORKS

17.40 END OF THE CONFERENCE DAY TWO

FRIDAY 21 MARCH 2014 CONFERENCE DAY THREE

07.45 WELCOME, REGISTRATION AND COFFEE



CHAIRMAN

Steve Simlo | IPv6 Product Manager | CISCO

Opening Speech

08.40 - 09.00



Dr. Jorge Pereira

| IPv6 & Wireless Expert |
EUROPEAN COMMISSION

Session IPv6 Operation

09.00 **Building Best Current Operational Practices**



Delivering an update on the BCOP work that we are doing (Best Current Operational Practices in different regions). Presenting the document, that is removing the next speedbump in IPv6 deployment (after RIPE-554), titled «Generic IPv6 troubleshooting procedures for helpdesks around the world».

Jan Zorz | ISOC

09.20 **A Service Provider Handbook to IPv6 deployment**



Introducing service provider strategies for IPv6 deployment. Communication and robust learning strategy are critical to building enterprise readiness for mass market launches of supportable services. Diving into each of these strategy sub-topics.

Matthew Wilder | P.Eng., Sr Engineer, IPv6 & IP Address Management, Office of the CTO | TELUS

09.40 **IPv6 BGP Flowspec - Dynamic Distribution of Security Profiles**



Providing a practical introduction with BGP Flowspec as practical IPv6 SDN control plane mechanism to distribute security policies. The attendees will understand how Flowspec rules are configured, distributed and ultimately, how they are applied. BGP flowspec is a technology aiding to the scalable and dynamic nature of IPv6 networks.

Gunter van de Velde | CISCO

10.00 COFFEE BREAK

10.30 **DHCPv6 Fingerprinting and BYOD**



The recent flood of personal mobile devices into the enterprise network environment has created an immense new security and access control challenge for corporate networks. DHCP fingerprinting appears to be a valuable mechanism for allowing the automation of security policy instantiation and regulating network access based on client type. Reviewing the challenges and the likely future of this potentially critical feature.

Tom Coffeen | INFOBLOX

Session Home Networks

10.50 **Consumer Services, the Home Network, and IPv6**



Diving into how Comcast is leveraging its deployment of IPv6 to extend the operator infrastructure into the customer's premises to enable the deliver of advanced, next generation services over IP, specifically IP video. A live demonstration of home networking for a cable environment is also being proposed as part of this session.

John Brzozowski | COMCAST

11.10 **IPv6 Ready CE Router Logo Program**



Revealing findings from the UNH InterOperability Lab's last home router interoperability test event in Spring 2013 and discussing the anticipated affect of the logo program on the state of IPv6 in the home. Invested in the future of home networking, the UNH InterOperability Lab is following the IETF Homenet working group and other groups, such as DLNA and CEA, who are also looking into IPv6 in the home.

Timothy Winters | UNH

11.30 **The IPv6 Routed Home**



Mark Townsley | IETF
| Homenet Working Group Co-Chair |

12.00 END OF THE CONFERENCE

12.30 LUNCH





MARRIOTT PARIS RIVE GAUCHE HOTEL AND CONFERENCE CENTER



Located on the renowned Parisian 'Left Bank', close to Montparnasse, the Latin Quarter and Saint Germain des Près, the hotel is only 5 minutes from the Boulevard Peripherique (the city's ring road). Moreover, it is easily accessible by train and airport transfers. The hotel's 757 Guestrooms & Suites offer you a bird's-eye view of Paris, whilst our latest technology equipments provide everything you need to work. Every room boasts a connectivity panel, linking all your digital tools to the flat-screen TV, a highly secure WiFi connection, and a large desk with an ergonomic chair.

If business, pleasure or both, take advantage of our many services, our 24-hour Concierge assistance, our room service or upgrade your stay with our Executive Level and Lounge.

Make the most of your stay and take a break in our 350 m2 (3,800 Sq Ft) Fitness Center which offers massages and private coaching upon reservation. Alternatively, you could follow one of our jogging routes.

R'Yves, a superb bar, lounge and restaurant in downtown Paris, welcomes you every day in a cozy and relaxing 70s atmosphere for a light refreshment or a full meal. Guests will enjoy a wide variety of international dishes offered by our talented chef. ...

And don't forget the temptations of the Left Bank such as the most famous shopping addresses in Saint Germain des Près, the world renowned Montparnasse Brasseries, the Champs Elysées and the Eiffel Tower, all less than 20 minutes away by metro!

For guests in Executive hotel rooms and suites, the Executive Lounge offers all day refreshments.

Marriott Revive® bedding with down comforter, custom duvet, crisp linens and plush pillows.

Enjoy spacious work space in our downtown Paris hotel's luxury suites with secure broadband Internet

Hotel rooms feature iron/ironing board, tea and coffee making facilities, and 24-hour room service.

This hotel has a smoke-free policy

Marriott Rewards Category 7

Deluxe room

€ 217.94 per night
1 King or 2 Twin/Single
One breakfast included

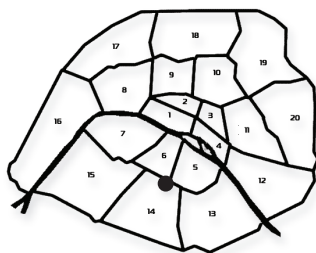
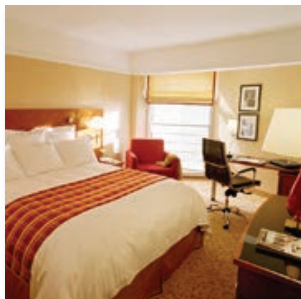
Executive room

€ 285.94 per night
Executive Lounge Access
1 King or 2 Twin/Single
One breakfast included

Junior Suite

€ 332.94 per night
Executive Lounge Access
1 King, 1 Sofabed
One breakfast included

To book your room:
<http://www.uppersideconferences.com>



17 Boulevard Saint Jacques
75014 Paris - France
Metro line 6: Saint Jacques or Glacière

Tel: ++ 33 (0)1 40 78 79 80
Fax: ++ 33 (0)1 45 88 43 93
Web: <http://www.marriott.com>

To book your room: <http://www.uppersideconferences.com>



DATES AND VENUE

18/21 March 2014
Hotel Marriott Paris Rive Gauche
17, Boulevard Saint Jacques
75014 Paris
France

Metro line 6: Glacière

ORGANIZED BY

Upperside Conferences
54 rue du Faubourg Saint Antoine
75012 Paris
France
Telephone: ++ 33 (0)1 53 46 63 80
Fax: ++ 33 (0)1 53 46 63 85
contact@uppersideconferences.com

SIRET: 399.004.068.00033
VAT: FR12 399.004.068

TERMS OF PARTICIPATION

Full payment or Purchase Order is required for admission to the conference.

PAYMENT

Cards (Visa, Amex, Mastercard, Diner)
Bank transfer
Cheque and Travelers cheque.

REGISTRATION FEES

4 Day Event 18/21 March 2014
Technical Tutorials + Conference
€ 2,495.00 + VAT 20% € 499.00 = € 2,994.00

3 Day Conference 19/21 March 2014
€ 2,075.00 + VAT 20% € 415.00 = € 2,490.00

Technical Tutorial 18 March 2014
€ 825.00 + VAT 20% € 165.00 = € 990.00

These passes include: access to V6 World Congress, access to the exhibition and interop event; coffee breaks, luncheons, welcome reception and proceeding.

Set of lecture notes (Electronic version on USB key)
Euros 750.00. Delivery by Fedex included.

To register for **Pass Plus V6 World Congress + NFV & SDN Summit 2014** or **MPLS SDN World**, Please go to <http://www.uppersideconferences.com>

CANCELLATION CONDITIONS

Substitution of delegates is permitted at any time.

For all cancellations received before February 18, 2014, the entire registration amount will be refunded.
For all cancellations received after February 18, 2014 and before March 4, 2014 the registration amount less 10% administrative charge will be refunded.
For all cancellations received after March 4, 2014, regrettably, no refunds can be made.

CONFERENCE PROGRAM MODIFICATIONS

Upperside Conferences reserves the right to make any necessary changes to the program. Every effort will be made to keep presentations and speakers as represented. However, unforeseen circumstances may result in the substitution of a presentation topic or a speaker.

CANCELLATION OF THE CONFERENCE

Payments will be refunded if the conference is cancelled by the organizer.

CONFERENCE LANGUAGE

English

I would like to register, I have read and accept registration fees, payment and cancellation policies.

Please tick and report the letter in the block below.

- A 4 Day Event 18/21 March 2014 Technical Tutorial + Conference | 2,495.00 + VAT 20% € 499.00 = € 2,994.00**
- B 3 Day Conference 19/21 March 2014 | € 2,075.00 + VAT 20% € 415.00 = € 2,490.00**
- C Technical Tutorial 18 March 2014 | € 825.00 + VAT 20% € 165.00 = € 990.00**
- D I am unable to attend, please reserve me a set of lecture notes. Euros 750.00 (+ VAT 20% for French companies only)**

	MR/MRS	FIRST NAME	FAMILY Name	EMAIL
<input type="checkbox"/> 1				
<input type="checkbox"/> 2				
<input type="checkbox"/> 3				
COMPANY			BOOKING CONTACT	
ADDRESS				
ZIP CODE		CITY	COUNTRY	
TEL.		FAX	EMAIL	



- I enclose a cheque in favour of Upperside Conferences
- Please invoice my Company. Payment upon receipt of invoice

<input type="text"/>														
HOLDER														
EXPIRY DATE										CVC				

INVOICING ADDRESS IF DIFFERENT / REMARKS
